



OFFICE OF THE PROVINCIAL AGRICULTURIST

MAY
MONTH
2020
YEAR

Accomplishment Report

PROGRAM/PROJECT ACTIVITIES	BRIEF DESCRIPTION	ACCOMPLISHMENT
I. RICE DEVELOPMENT PROGRAM		
a. Seed Assistance Program		
a.1. Rice Seed Development Propagation and Promotion	DA-PhilRice Collaborative Project. One of the key program of Rice Competitiveness Enhancement Fund (RCEF) aims to improve rice farmers' competitiveness and income amidst the liberalization of rice trade.	Total allocation of the province for this 2020 wet season cropping is 180,595 bags of 20kg/bag good for 90, 298 hectares. Of the total allocation, 112,182 bags were already positioned to the different municipalities and 90, 466 bags were already distributed to 27, 273 farmer-beneficiaries.
a.2. Rice Resiliency Project (RRP)	DA-PLGU Collaborative Project aims to increase local rice production to combat global trade uncertainties and put the country to a more food-secure position.	
a.2.1.Enhanced Hybrid Rice Production.	An intensified promotion of high-yielding technology through distribution of hybrid rice seeds and inorganic fertilizers.	The province has a total allocation of seeds good for 25,820 hectares. Of the said Allocation, 16,124 bags of 9kg/bag good for 8, 062 hectares were already distributed.
a.2.2 Expanded Inbred Rice Production	An expanded inbred certified seed to enhance production in non-RCEF areas	On-going delivery of seeds.
b. Seed Production	DA-PLGU Collaborative Project Commitment of individual accredited seed growers to provide certified seeds for buffer seed stocking.	Area harvested Certified seeds 1,752.14 Ha and Registered seeds 30.4. Seed Certification: certified seeds 257,559 bags at 20kg/bag passed with tag under the RCEF and 69,885 bags at

		40kg/bag passed with tags under the regular program. Registered seeds 2,308 bags at 40kg/bag passed with tags under regular program
c. Technology Demonstration on Mechanization in Rice Production	DA-PhilRice-PLGU -MLGU collaborative. Establishment of Technology Demonstration showcasing mechanization and also serve as the learning field.	The technology demonstration field with an area of 7 hectares planted with 7 different hybrid and 9 inbred varieties. Rice plants are on heading to flowering stage already.
d. Season-Long Farmers' Field School	PLGU Funded. A collaborative project of PLGU and MLGU, a combination of lectures and hands-on training to farmer-participants to enhance their capacity and farming practices	A total of 40 rice farmers in the nearby barangays in Cansan, Cabagan, Isabela are the participants. Meeting is once a week, every Friday. For the meantime meeting was freeze because of the Enhanced Community Quarantine due to COVID-19.
e. Monitoring of Palay Price	Data collection of prevailing price per kilo of palay from the different commercial centers	For the month of May, 2020, the average price of palay: Dry: 20.76 Wet: 16.91
f. Monitoring of Rice Harvesting	Data collection on the status of rice harvesting	Area Harvested=3,511.23 ha Production = 16,530.15 mt Average Yield = 4.71 mt/ha
2. FINANCIAL ASSISTANCE TO RICE FARMERS		
a. Rice farmers Financial Assistance(RFFA)	DA-Initiated Financial Assistance. to provide cash grants to smallholder rice farmers and enhance farmers' opportunity to improve productivity and profitability.	Total number of farmers approved for the cash grants : 46, 396, Number of farmers received the notice of cash grants : 42,671
b. Financial Subsidy to Rice Farmers FSRF)	DA--Initiated Financial Assistance . A cash subsidy to assists small rice farmers and registered to RSBSA. Intended to further support the small farmers who are experiencing	Number of approved beneficiaries: 7,233 farmers Status: on -going distribution

	the effects of the quarantine measures due to the COVID-19 pandemic.	
--	--	--

PROGRAM/PROJECT/ACTIVITY	PROJECT DESCRIPTION	STATUS/REMARKS/ACCOMPLISHMENT																																	
II. CORN DEVELOPMENT PROGRAM																																			
A. Monitoring of Corn Planting & Harvesting	Data collection on the status of corn planting and harvesting	<div>Dry Cropping Season 2019-2020 Harvesting</div> <table><tr><th>Corn Type</th><th>Area harvested (ha.)</th><th>Production (MT)</th></tr><tr><td>Yellow</td><td>8,261.33</td><td>41,666.45</td></tr><tr><td>Total</td><td>8,261.33</td><td>41,666.45</td></tr></table> <div>Wet Cropping Season 2020 Planting</div> <table><tr><th>Corn Type</th><th>Area Planted (ha.)</th></tr><tr><td>Yellow</td><td>82,359.57 ha</td></tr><tr><td>White</td><td>698.55 ha</td></tr><tr><td>Total</td><td>83,058.12 ha</td></tr></table> <div>Note: Terminal Harvest for DS 2019-2020</div> <div>Area Harvested- 119,740.65 has</div> <div>Production -563,660.32 MT</div> <div>Average prevailing price of corn monitored from different trading centers for the month of May 2020 were as follows:</div> <table><tr><td colspan="2">Yellow Corn</td></tr><tr><td>Dry</td><td>12.66/Kg.</td></tr><tr><td>Fresh</td><td>9.24/Kg.</td></tr><tr><td colspan="2">White Flint Corn</td></tr><tr><td>Dry</td><td>11.75/Kg.</td></tr><tr><td>Fresh</td><td>8.50/Kg.</td></tr><tr><td colspan="2">Glutinous Corn</td></tr><tr><td>Dry</td><td>18.00/Kg.</td></tr></table>	Corn Type	Area harvested (ha.)	Production (MT)	Yellow	8,261.33	41,666.45	Total	8,261.33	41,666.45	Corn Type	Area Planted (ha.)	Yellow	82,359.57 ha	White	698.55 ha	Total	83,058.12 ha	Yellow Corn		Dry	12.66/Kg.	Fresh	9.24/Kg.	White Flint Corn		Dry	11.75/Kg.	Fresh	8.50/Kg.	Glutinous Corn		Dry	18.00/Kg.
Corn Type	Area harvested (ha.)	Production (MT)																																	
Yellow	8,261.33	41,666.45																																	
Total	8,261.33	41,666.45																																	
Corn Type	Area Planted (ha.)																																		
Yellow	82,359.57 ha																																		
White	698.55 ha																																		
Total	83,058.12 ha																																		
Yellow Corn																																			
Dry	12.66/Kg.																																		
Fresh	9.24/Kg.																																		
White Flint Corn																																			
Dry	11.75/Kg.																																		
Fresh	8.50/Kg.																																		
Glutinous Corn																																			
Dry	18.00/Kg.																																		
B. Monitoring of Corn Price	Data collection on prevailing price per kilo of corn from different trading centers																																		
C. Sustainable Corn Production in Sloping Areas (SCOPSA)	Technology Demonstration for the control of soil erosion in hilly/sloping areas cultivated to corn	<div>Date of Demo establishments</div> <div>Cooperator: Danilo Echaure</div> <div>Site (1): Flores, Naguilian, Isabela</div> <div>Area (ha): 3.0 has</div> <div>Date Planted: May 21, 2020</div> <div>Variety Planted: NK 8840 and NK 6410</div> <div>Cooperator: Jhonny Enril</div> <div>Site (2): Annanuman, San Pablo, Isabela</div> <div>Area (ha): 3.0 has</div> <div>Date Planted: May 18, 2020</div> <div>Variety Planted: AH J 505</div>																																	

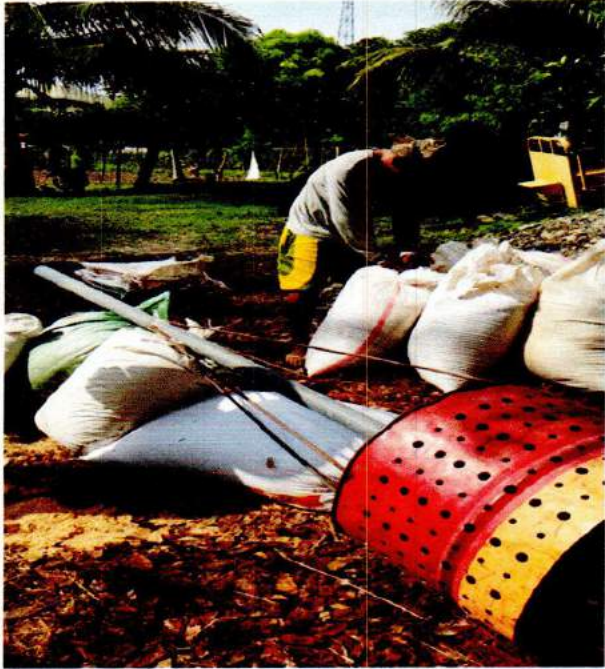
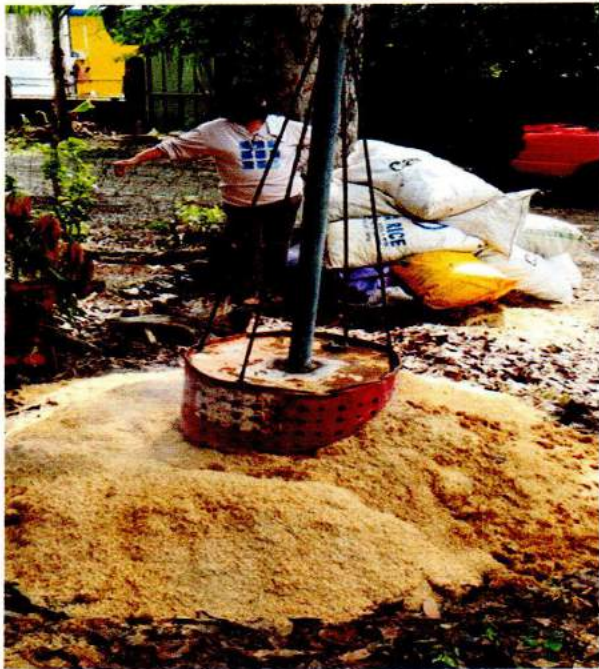
PROGRAM/PROJECT/ACTIVITY	PROJECT DESCRIPTION	STATUS/REMARKS/ACCOMPLISHMENT
<p>III. HIGH VALUE COMMERCIAL CROPS DEVELOPMENT PROGRAM</p> <p>A. Operation and Maintenance of Provincial Nursery</p> <p>B. Monitoring of Planting and Harvesting</p> <p>C. Meetings/Trainings and Workshops attended</p>	<p>PLGU initiated. Production of assorted vegetable seedlings for distribution to farmers.</p> <p>PLGU initiated. Production of sexually propagated fruit trees.</p> <p>Data collection on status of planting and harvesting</p>	<p>Produced a total of 75,545 pieces assorted vegetable seedlings. Of which 75,545 were distributed to 374 farmer recipients.</p> <p>Maintenance of produced 1,200 pieces of assorted fruit tree seedlings. Distributed 200 pieces of assorted fruit tree seedlings.</p> <p>Monitored the Production and Harvesting of Mango trees of the Five(5) municipalities (Cauayan City, Santiago City, Roxas, Tumauni and Echague) with an area of 1,077.68 hectares.</p> <p>Monitored 200 hectares Planted with assorted vegetable within the whole Province with a total yield of 2,200 metric tons.</p> <p>-Conducted launching of the We Heal and Win As One in Plant. Plant. Plant Program " Ahon Lahat Pagkaing sapat (ALPAS), ADOPT-A-VILLAGE/BARANGAY in Brgy. Alibagu, City of Ilagan.</p> <p>Distributed 9,500 assorted vegetable seedlings (Eggplant, Sili and Tomatoes) to the 300 backyard vegetable farmers.</p> <p>Distributed 300 packs assorted vegetable of seeds (Petchay, Patola, Upo, String Beans and Okra to the 300 backyard vegetable farmers.</p> <p>Distributed 1,000 assorted fruit trees (Mango, Pomelo, Bugnay, Tamarind and Guava) to the 300 backyard vegetable farmers.</p>

D. Monitoring of Price	PLGU Initiated. Data collection on prevailing market price of assorted vegetables from different commercial trading centers in the province.	Average price per kilo of the following vegetables monitored for the month of May 2020. <ul style="list-style-type: none">• Ampalaya 40.00• Eggplant 40.00• Tomato 30.00• Sitao 50.00• Squash 25.00• Pechay 30.00• Okra 40.00
------------------------	---	---

HVCCDP Photos and Documentation
for the Month of **May 2020**

**"OPERATION AND MAINTENANCE OF THE
PROVINCIAL PLANT NURSERY"**

- Carbonized rice hull preparation to be used in the production of vegetable and fruit tree seedlings in the Provincial Plant Nursery.



- Adoption of Container Gardening at the Provincial Plant Nursery



- Hauling of Mill Ash at Green Future Innovation Incorporated, San Mariano, Isabela for seedling production at the Provincial Plant Nursery.



"PREPARATION FOR THE DEPARTMENT OF AGRICULTURE'S PLANT. PLANT.
PLANT. PROGRAM ADOPT A VILLAGE/VILLAGE"

- Repacking of Vermicast



- Packing of vegetable seeds and seedlings



▪ "MONITORING OF SEASON LONG TRAINING MANGO FARM SITES "



"IMPLEMENTATION OF THE DEPARTMENT OF AGRICULTURE'S PLANT. PLANT. PROGRAM ADOPT A VILLAGE/VILLAGE WHERE IN BRGY. ALIBAGU, CITY OF ILAGAN, ISABELA AS THE BENEFICIARY"



▪ Distribution of Planting Materials and Brooder Chicks to the beneficiaries



- Demonstration of the Different Nursery Management

Soil Media Preparation



Pricking



- Other photos taken during the conduct of Plant. Plant. Plant. Program



- Provincial Plant nursery Production of Assorted vegetable seedlings to be distributed to walk in clients and farmers of Isabela.



PROGRAM/PROJECT/ACTIVITY	PROJECT DESCRIPTION	STATUS/REMARKS/ACCOMPLISHMENT
IV.. FISHERIES DIVISION		
1. Operation and Maintenance of San Pablo Freshwater Fish Farm	Operation and management of existing fishery facilities to support the province requirements for fish stocks by producing 1.0M fingerlings (BFAR/PLGU Initiated)	- Rearing/ Grow-out of future breeders
2. Technical Advisory Services & Orientation/ Dissemination of Fishery Programs & Projects	To conduct technical assistance to fishfarmers /fisherfolk with the existing technologies in aquaculture and dissemination of fisheries programs and projects (BFAR Initiated).	- 7 techno-demo cooperators
3. Support and Assistance to BFAR	To showcase existing and appropriate technologies in aquaculture in selected municipalities.	<ul style="list-style-type: none"> - No. of techno-demo stocked – 7 - Area -4,000 sq.m. - No. of stocks - 50,000 pcs. - Total No. of TD Established – 17 - No. of Municipalities served – 17 1. Modified Rice Fish Culture – 8 2. Polyculture of Tilapia and Ulang – 2 3. Tilapia Pond Culture - 7
4. Assistance in Fingerling Dispersal Operation & Fisherfolk Registration	To increase production in backyard fishpond project of fish farmers & inclusion in Fisherfolk Registration of BFAR.	<ul style="list-style-type: none"> - No. of fingerling dispersed - 30,000 - No. of fisherfolk beneficiaries – 18 - No. of Municipalities served – 1
5. Fishery Insurance	A protection and security among marginalize fisherfolk engage in fisheries livelihood projects (PLGU Initiated)	- No. of fisherfolk insured – 7
6. Fish Production Report (partial)	Monthly consolidation of fish production gathered from different municipalities/cities of the province that will serve as reference in the	<ul style="list-style-type: none"> - Fishpond Area-109.183 has.; Prod'n-621.528 MT - Fishcage - 66.041 MT - SWIP - 10.17 MT - CBW's - 357.305MT

	implementation of fishery programs (PLGU Initiated).	- Marine - 202.607
7. Price Monitoring of Prime Fishery	To ensure that prices are under DA-SRP	- Bangus - P140.00-160.00 (medium, big) - Tilapia - P120.00 - 130.00 (assorted) - Galungong (Bilog) (170.00-180.00) - Pink Salmon -P150.00 Hito -P130.00-140.00
8. Assistance to ASF Monitoring Checkpoint	For Bio-Security and Surveillance on ASF	- No. of hours on duty - 12 days @ 24 hrs/day.

Conducted monitoring/sampling and stocking of fingerlings to the newly established technology demonstration projects initiated by BFAR. Technical advisory services to fish farmer cooperators were also undertaken with BFAR and LGU Technical Staff.






PROGRAM/PROJECT/ACTIVITY	PROJECT DESCRIPTION	STATUS/REMARKS/ACCOMPLISHMENT
V. AGRICULTURAL ENGINEERING SERVICES 1. Establishment of Mechanical Recirculating Dryer in Brgy. Cansan, Cabagan, Brgy. San Fabian, Echague and Brgy. Minanga, San Mariano, Isabela	Grain Drying facilities operated by the Provincial Government of Isabela to help the farmers to increase the quality and add value for the produced.	<ul style="list-style-type: none"> The installation of both mechanical recirculating dryers are on-going at Brgy. Cansan, Cabagan and Brgy. San Fabian, Echague, Isabela and will be finish by June and testing will commence to determine the full operating capacity of the system and to determine the required energy, costing man-power and time needed to operate the system. Likewise, in Brgy. Minanga, San Mariano, Isabela, the warehouse building is on-going (more or less 25% accomplishment).

PROGRAM/PROJECT ACTIVITIES	BRIEF DESCRIPTION	ACCOMPLISHMENT
VI. Farm Home Resources and Management Services (RIC) Registration/ Formation and Strengthening of Women RIC Organization Monitoring of Livelihood projects	Strengthening and empowerment of rural women towards agricultural development	Consolidated submitted registration/ enrollment of Rural Improvement Club to wit: Alicia No. of Clubs- 2 No. of Barangays -2 (Sto. Domingo and Mataas na Kahoy) Total Membership – 651 San Mateo No. of Clubs- 3 Total Membership - 350 Monitored existing livelihood projects in the municipality to wit : San Guillermo- Fruits Processing such as Pine Apple juice and wine Gamu- Smoked Fish Production Quezon- Smoked Fish Production

PROGRAM/PROJECT ACTIVITIES	BRIEF DESCRIPTION	ACCOMPLISHMENT
VII. Farm Youth Development Services (4H) 1. Registration/ formation and strengthening of 4H Club Organization 2. Monitoring of Livelihood projects	Organization, Strengthened and empowerment of Young Farmer towards agricultural development	Consolidated submitted registration/ enrollment of Young Farmer to wit: San Mateo No. of Clubs- 3 Total Membership - 120 San Guillermo No. of Clubs- 3 Total Membership – 80 Monitored existing livelihood projects in the municipality to wit : San Mateo- Vegetable seedlings production and Vermicast Production Echague- Vegetable Production

PROGRAM/PROJECT ACTIVITIES	BRIEF DESCRIPTION	ACCOMPLISHMENT
VIII. PROVINCIAL AGRICULTURE AND FISHERY COUNCIL (PAFC)	DA collaborative project involving private sector participation as a frontline mechanism in the development processes in agriculture and fisheries	<ol style="list-style-type: none"> 1. Since we are under Enhanced Community Quarantine, we monitored activities from Different City/Municipal Agricultural and Fisheries Council (C/MAFC) Chairman with regards to their area of Responsibilities. Some of the Activities are: <ol style="list-style-type: none"> a. the AFCs helping their farmers to sell their produce to other Barangays thru their City/Municipal Agriculture Office staff. b. continue assisting in the RSBSA enrollment. c. distribution of seeds to farmers from the DA program under RCEF 2. Preparation for Provincial Gawad Saka Awarding, and 3. Preparation for Gawad Saka Regional Evaluation

Prepared/Consolidated by:


ALETH Y. PAGULAYAN
Administrative Officer IV

Noted:


MARITES E. FROGOSO, DPA
Provincial Agriculturist