
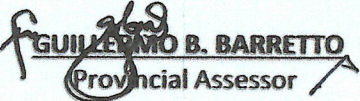
	PROVINCIAL ASSESSOR'S OFFICE	NOVEMBER
		MONTH
	Accomplishment Report	2022
		YEAR

I. FOCUS AREA

PROGRAM/PROJECT/ACTIVITY	PROJECT/PROGRAM DESCRIPTION	STATUS/REMARKS/ACCOMPLISHMENT
I. REVENUE GENERATION AND RESOURCE MOBILIZATION PROGRAM		
1.1 Approval of Assessment Transactions emanating from the 34 Municipal Assessor's Offices		
1.1.1 Real Property Units (RPU's) for newly discovered real properties	a. Declaration of newly discovered real properties such as land, buildings & machineries for taxation purposes	<p>Approved a total of 663 Real Property Units (RPU's) with total Market Value (MV) of Php - 251,307,330.00 and Assessed Value (AV) of Php P68,227,800.00 for newly declared <u>taxable real properties</u> on Lands, Buildings and Machineries.</p> <p>Residential Bdlg-(MV)-P200,903,620.00 (AV)-P 45,419,890.00 Agricultural Land(MV)-P 3,762,750.00 (AV)-P 263,390.00 Building (MV)-P 8,131,500.00 (AV)-P 3,901,130.00 Commercial Bldg(MV)-P 20,550,540.00 (AV)-P 9,611,200.00 Machinery(MV)-P 17,604,560.00 (AV)-P 8,789,380.00 Industrial Mach.(MV)-P 354,360.00 (AV)-P 242,810.00</p> <p><u>Exempt Properties</u> (MV)-P 75,540,820.00 (AV) - P 32,714,790.00</p>
1.1.2 RPU's for transferred properties	b. Transfer of Ownership with updated Real Property Tax and Transfer Tax Payment, with Certificate Authorizing Registration for the payment of either Capital Gain Tax, Estate Tax and or Donors Tax, whichever is applicable	Approved a total of 270 RPU's on transferred properties
1.1.3 RPU's for subdivision/consolidation/revision or physical change	c. Real properties that are subdivided (remaining portions) consolidated and revised as to classification, actual use, area, boundaries, lot number, correct name of owner, etc. and re-sectioning of tax maps.	Approved 1,191 RPU's of subdivided, consolidated, re-sectioned and revised assessment data of real properties

<p>1.2 Issuance of Certified Copy of Tax Declaration (TD), various Certifications, Certified photocopy of TDs and such other assessment record</p> <p>1.3 Annotation of encumbrance on the face of Tax Declaration</p>	<p>Issued Certifications, Certified copy and photocopy to BIR as basis in the computation and collection of Capital Gains Tax, Doc. Stamp Tax, Donor's Tax and Estate Tax; for DENR in the issuance of title; for DAR in identifying Farmer Beneficiaries and for real property owners for their file copy and reference</p> <p>Annotation of encumbrance used as bail bond ordered by the court, mortgage contract issued by bank and Adverse Claim furnished by property owners</p>	<p>We have issued the following:</p> <p>285 certified copy of Tax Declarations 262 various certifications</p> <p>133 certified photocopies of old TDs, documents and other assessment record</p> <p>We have annotated twenty two (22) Tax Declarations (TDs) based on the following:</p> <p style="padding-left: 40px;">Mortgage Contract- 18 TDs Adverse Claim- 3 TDs Bail Bond - 1</p>
<p>II. ASSESSMENT ACCOUNTABILITY AND DISCIPLINE</p>		
<p>1. Field Appraisal and Assessment of Real Property</p>	<p>Conduct ocular inspection and technical assistance as per request of Real Property Owners, different agencies and LGUs.</p>	<p>Mr. Guillermo B. Barretto, Provincial Assessor and Mr. Angelito P. Garcia, Book Binder III, rendered technical assistance at LGU-San Mateo, Isabela on November 8, 2022.</p> <p>Engr. Ferdinand P. Ramos, Tax Mapper I, Mr. Angelito P. Garcia, Book Binder III, Mr. Kristian A. Balmaceda & Kurt Daniel B. Tomas, both Tax Mapping Aide, conducted comprehensive land survey at Cabagan, Isabela on November 8, 2022 and at San Pablo, Isabela on November 9-11, 2022.</p> <p>Mr. Guillermo B. Barretto, Provincial Assessor Engr. Ferdinand P. Ramos, Tax Mapper I, Mr. Angelito P. Garcia, Book Binder III and Mr. Melvin D. Simon, Tax Mapping Aide, conducted ocular inspection And visitation at Dinapigue Mining on November 18, 2022.</p> <p>Engr. Ferdinand P. Ramos, Tax Mapper I, Mr. Kristian A. Balmaceda & Kurt Daniel B. Tomas, both Tax Mapping Aide conducted relocation survey on the adjacent lots at Echague, Isabela on November 28-29, 2022.</p>
<p>2. LGU Visitation & rendering technical assistance (Municipal Assessor's Office)</p>	<p>Conduct of Tax Mapping Operations Project</p>	<p>San Guillermo-24 brgys. have been completed out of the 26 brgys. and there are 2 brgys. with on-going parcellary mapping.</p> <p>San Pablo and Santa Maria, Isabela are still completing their records conversion.</p>
<p>3. Digitization of Maps</p>	<p>A continuing project of the office to digitized the maps of all the municipalities</p>	<p>Continued the digitization of maps for the municipalities of Gamu, San Guillermo, San Pablo, Santa Maria, Cordon, Roxas, Aurora and San Mariano by the staff from Tax Mapping Division.</p>

II. OTHE PROGRAM/PROJECT/ACTIVITY

PROGRAM/PROJECT/ACTIVITY	PROJECT/PROGRAM DESCRIPTION	STATUS/REMARKS/ ACCOMPLISHMENT
III. CAPABILITY BUILDING		
1. Regular Monthly meeting of the Philippine Association of Municipal Assessors (PAMAS), Inc.- Isabela Chapter	PAMAS regular monthly meeting	Mr. Guillermo B. Barretto, Provincial Assessor & Engr. Ferdinand P. Ramos, Tax Mapper I, attended the PAMAS regular monthly meeting at LGU-Dinapigue, Isabela on November 17, 2022.
2. PAO personnel monthly meeting	Regular monthly meeting of Provincial Assessor's Office (PAO) personnel	Conducted regular monthly meeting of personnel on November 4, 2022 in the office.
2. SN Aboitiz Power-Magat's Host Communities Forum	SN Aboitiz Power-Magat invited the Provincial Assessor's Office to attend their Forum	Engr. Felipe O. Guray Jr., Tax Mapper IV, attended the Sn Aboitiz Power-Magat's Host Communities Forum held on November 17, 2022 at Charina's Suite Hotel, Santiago City.
IV. INTERNAL ADMINISTRATION		
1. Submission/Review and approval of uploaded Assessment Report	Quarterly Report on Real Property Assessment (QRRPA) submitted by the thirty four (34) Local Assessors' thru LIFT System of the BLGF, DOF.	Continued in the review of uploaded QRRPA reports in the LIFT system.
2. Act on written request	Written request of National/Local Agencies in support to their different programs	Acted a total of 25 correspondence in all the requests
V. OTHER MATTERS:		
1. ISO 9001:2015 Refresher Course	All Internal Quality Auditor were invited to attend Refresher Course	Internal Quality Auditors in the office attended the Refresher Course conducted by Macro Vision Consultancy via Zoom on November 9, 2022
2. Internal Quality Audit	Conducted Internal Quality Audit to all departments of PGI	Internal Quality Audit was conducted per department on November 17-18, 2022 in compliance with ISO 9001:2015 standard.
3. ISO 9001:2015 System's Audit	Macro Vision Consultancy conducted System's Audit	System's Audit was conducted to different departments of PGI in preparation for ISO 9001:2015 certification
4. Technical Budget Hearing	Invitation by the Sangguniang Panlalawigan headed by Hon. Faustino G. Dy III, Vice Governor, to attend Technical Budget Hearing	Mr. Guillermo B. Barretto, Provincial Assessor, attended the Budget Deliberation held on November 28-29, 2022 in Manila.
Prepared by:  YULMA MARIE C. BALABBO LAOO IV/Acting Assistant Provincial Assessor for Field Operation	Certified Correct:  GUILLERMO B. BARRETTO Provincial Assessor	

PICTURES TAKEN ON THE FOLLOWING ACTIVITIES FOR THE MONTH OF NOVEMBER 2022



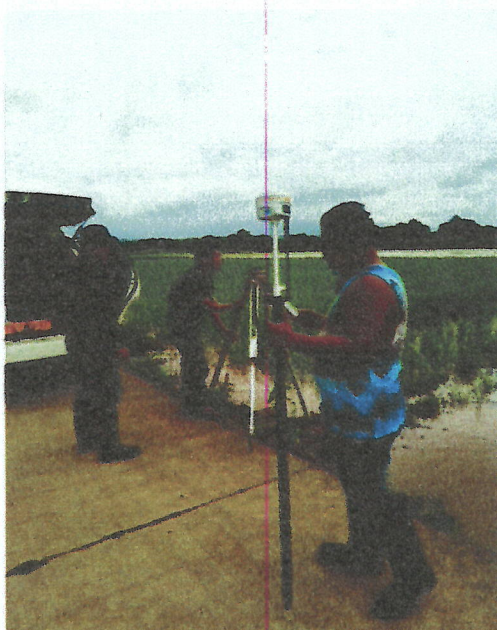
PROVINCIAL ASSESSOR'S OFFICE REGULAR STAFF MEETING ON NOVEMBER 4, 2022



PAMAS ISABELA CHAPTER REGULAR MONTHLY MEETING HELD ON NOVEMBER 17, 2022 AT LGU-DINAPIGUE, ISABELA



MR. GUILLERMO B. BARRETTO, PROVINCIAL ASSESSOR, TOGETHER WITH PAO PERSONNEL, PAMAS MEMBERS AND REPRESENTATIVES FROM DINAPIGUE MINING, DINAPIGUE, ISABELA ON NOVEMBER 18, 2022



LAND SURVEY, OCULAR INSPECTION AND TECHNICAL ASSISTANCE TO DIFFERENT MUNICIPALITIES OF ISABELA